

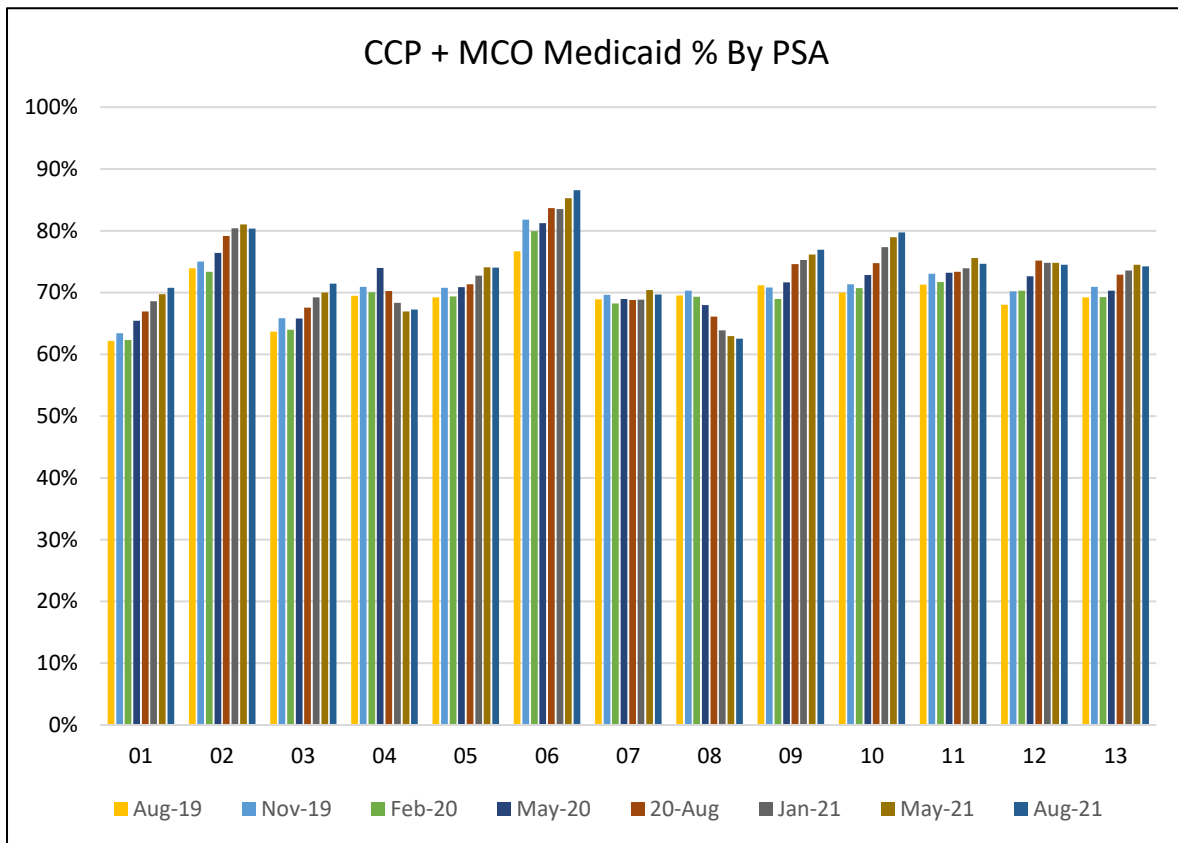
Illinois Department on Aging  
OASAC Medicaid Enrollment Oversight Subcommittee

Enrollment Trend

September 7, 2021 - Data as of August 17, 2021

CCP + MCO Medicaid Percentage by PSA								
PSA	Aug-19	Nov-19	Feb-20	May-20	Aug-20	Jan-21	May-21	Aug-21
01	62%	63%	62%	65%	67%	69%	70%	71%
02	74%	75%	73%	76%	79%	80%	81%	80%
03	64%	66%	64%	66%	68%	69%	70%	71%
04	69%	71%	70%	74%	70%	68%	67%	67%
05	69%	71%	69%	71%	71%	73%	74%	74%
06	77%	82%	80%	81%	84%	84%	85%	87%
07	69%	70%	68%	69%	69%	69%	70%	70%
08	70%	70%	69%	68%	66%	64%	63%	63%
09	71%	71%	69%	72%	75%	75%	76%	77%
10	70%	71%	71%	73%	75%	77%	79%	80%
11	71%	73%	72%	73%	73%	74%	76%	75%
12	68%	70%	70%	73%	75%	75%	75%	74%
13	69%	71%	69%	70%	73%	74%	75%	74%
<b>Total</b>	<b>69.0%</b>	<b>70.7%</b>	<b>69.9%</b>	<b>71.9%</b>	<b>73.8%</b>	<b>74.0%</b>	<b>74.5%</b>	<b>74.2%</b>

\*Based on Authorized participants



Illinois Department on Aging  
OASAC Medicaid Enrollment Oversight Subcommittee

Enrollment Trend

September 7, 2021 - Data as of August 17, 2021

