

Long Term Care in Illinois

Kimberly Stoerger, MSW
Regulatory Director
Illinois Healthcare Association



Who are we?

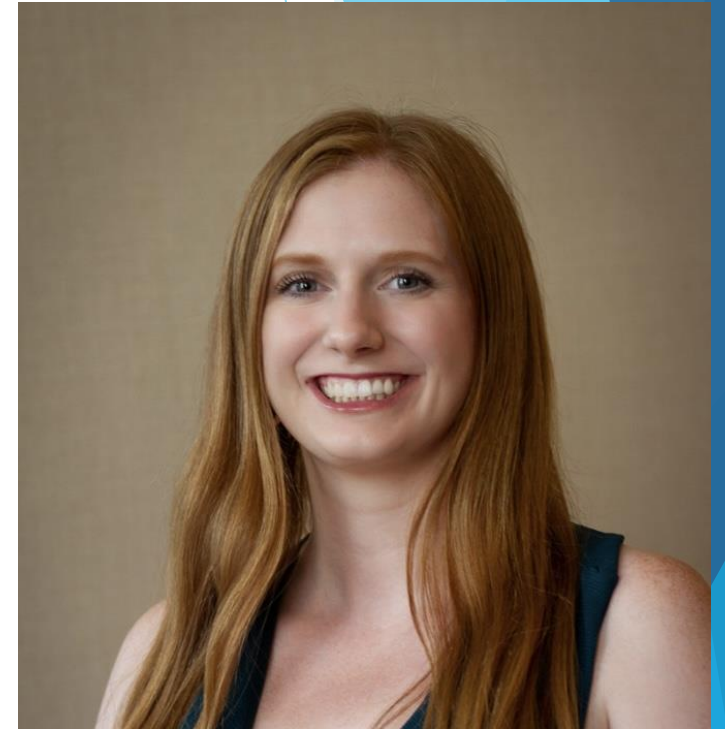
Illinois Healthcare Association (IHCA) represents 400LTC facilities across the state including various settings including

- Skilled Nursing Facilities (SNF)
- Assisted Living (AL)
- Supportive Living (SLP)
- Sheltered Care
- Developmentally Disabled Facilities (ICF/DD)
- Medically Complex Facilities (MC/DD)

What is my role?

Macro Social Worker

- ▶ Analyze federal and state regulations and policies
- ▶ Negotiate legislation and implement policy
- ▶ LTC survey process
- ▶ Dissect infection control guidance and regulations
 - ▶ Federal: CMS/CDC/OSHA/FDA
 - ▶ State: IDPH/HFS/DFPR/DOA/DOL



IHCA Role

- ▶ We advocate and educate our members on legislation, regulations, best practices, and new changes that are forthcoming.
- ▶ We work collaboratively with all state agencies that impact the LTC sector.
- ▶ Our goal is to assure quality care is prioritized and reduce administrative burden on facilities.

Workforce Issues

- ▶ Our main concern we are currently addressing is workforce including recruitment and retention.

Initiatives

- ▶ CNA-I program rules were adopted and went into effect 9/25/24. We are working to have the online program approved.
- ▶ We recently passed medication aides in May ([PA 103-0898](#))
 - ▶ IL is the 41st state to implement this initiative nationwide
 - ▶ Awaiting proposed rules from Department of Public Health