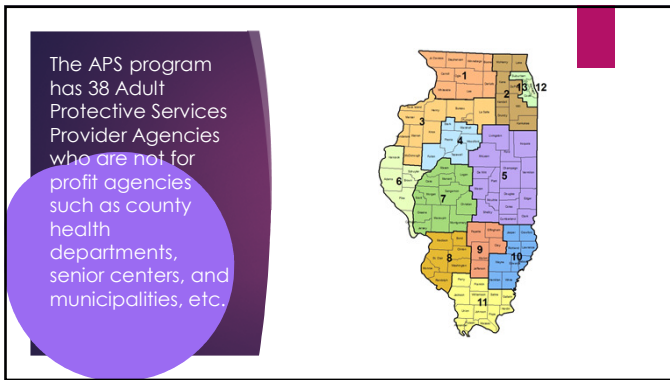
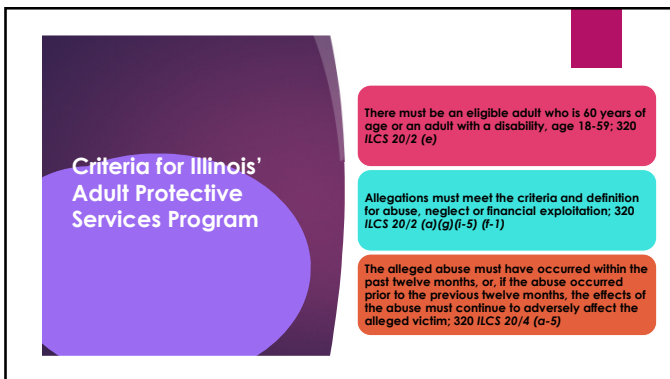




1



2



3


**APS
or
Ombudsman?**

- The alleged abuse or neglect occurred **outside** of a facility and not under facility supervision by a family member, caregiver, or another person who has a continuing relationship with the alleged victim; 320 ILCS 20/2 (e)
- The alleged financial exploitation was perpetrated by a family member, caregiver or another person who has a continuing relationship with the alleged victim, but who is **not an employee** of the facility where the alleged victim resides; 320 ILCS 20/2 (d)
- The eligible adult may reside within a facility **BUT** the abuse occurred outside of the facility.

4

SCAMS

- ▶ Exploitation by strangers is reported to and investigated by the police. Consumer fraud may be reported to the Illinois Attorney General's Office
- ▶ Attorney General Hotline: (800)243-5377
- ▶ Medicare Fraud Hotline: 1-800 Medicare
- ▶ National Elder Fraud Hotline:
1-833 Fraud 11



5

Types of Abuse, Neglect and Exploitation Chapter 2: 203

- Abuse**
 - Physical
 - Sexual
 - Emotional
 - Confinement
- Neglect**
 - Passive
 - Willful Deprivation
 - Self-Neglect
- Exploitation**
 - Financial
- Abandonment**

6

7

What to know as a reporter....

- Reporter identity is kept confidential
- Reporter is immune from civil/criminal liability
- Anonymous reports accepted
- Our legal responsibility to investigate reports
- Contact law enforcement

7

8

What we do....

- ▶ Complete a face-to-face meeting with the alleged victim
- ▶ With the victim's consent, meet with the alleged abuser
- ▶ Provide referrals
- ▶ Create a case plan to address risk factors
- ▶ Follow-up to assure victim remains safe.

8

9

Community Involvement-WEAAD

WEAAD is World Elder Abuse Awareness Day...June 15

Today and every day APS works to:

- Provide education on abuse and neglect
- Provide training to law enforcement, financial institutions, hospitals, etc.
- Participate in community events such as in-services, festivals, events, etc.
- Educate staff and communities on best practices on prevention

9



10
